

# PRINTPOWER

COMMERCIAL & INDUSTRIAL  
PRINT SOLUTIONS



**SCAN ME**

Scan to visit our  
Production Printing page

Contact Us  
855.741.6400

Visit Us  
[www.TomorrowsOffice.com](http://www.TomorrowsOffice.com)

Follow Us @tomorrowsoffice



# Atlantic

# Thinking production printing? Think Atlantic, Tomorrows Office.



## PLATINUM PRODUCTION PRINT SUPPORT

- On-site field support within 4 hours
- Pre/Post production support and training
- 100% of Field Support Engineers are EFI Fiery Certified Professionals
- Corporate member of the IDEAlliance International Organization
- 100% of Production Print Solution Analysts hold prestigious industry certifications
- Idealliance G7 EXPERT Certified Engineers on staff



## ATLANTIC'S PREDICTIVE ANALYSIS

- Service Alerts are received when required parts are reaching threshold intervals
- Maintenance is scheduled at customer's convenience
- Monitor Site Stock: to make sure items that are nearing failure are on-site
- Error Alerts – when an alert is received the customer receives a call inquiring if service is required
- Once a call is completed, the customer receives a “live” call to confirm that the service provided met their expectations
- In the event that the customer is not satisfied, an additional service call is initiated, and a specialist is on-site with 24 hours to resolve the issue
- After the above service call has been completed, the customer will receive another follow-up “live” call to confirm all has been resolved
- Currently, we are achieving a 97% plus satisfaction feedback
- **HELP LIGHTNING** - Remote Expertise using Merged Reality that allows our remote experts to virtually reach out and touch what the service tech or customer is working on



## GUARANTEED REPLACEMENT PROGRAM

For any new production unit purchased or leased from Atlantic (the “Unit”) for which the Customer remains continuously covered under and compliant with an Atlantic maintenance contract, if Atlantic determines the Unit is not repairable to the manufacturer's published specifications, upon your written request, we will provide the following remedy:

1st YEAR: replacement with a new Unit

From end of the 1st year through lease expiration date\*: replacement with a like Unit (with comparable usage)

\*For purchases, the remedy applies for 3 years from the Unit purchase date.

## Talk to the top

Atlantic's President, Larry Weiss, is accessible to all customers at **(212) 507-9411**

# RICOH Digital Press

## RICOH Pro C5300s/5310s Series



### CAPTURE AND CAPITALIZE ON MORE OPPORTUNITIES

- High productivity with full-color output up to 80 ppm
- Exceptional image quality with VCWEL Laser resolutions up to 2400 x 4800 dpi
- Best-in-class media support for specialty stocks, oversized sheets and heavier weights
- Accurate registration and color consistency for higher-quality jobs
- Automatic duplexing up to 13" x 19.2" and weights to 360 gsm
- Intuitive user controls with a 10" Smart Operation Panel
- Expansive selection of finishing options for greater flexibility
- Choice of Ricoh and EFI Controllers to match workflows
- Integrate with Ricoh software solutions to create efficiencies that drive measurable results – from prepress to job and device management
- ENERGY STAR certified for lower operating costs and sustainability goals
- User authentication and data encryption protect sensitive information

POWERFUL RICOH OR EFI CONTROLLERS TO MANAGE YOUR WORKFLOW

### FAST HIGH-QUALITY VARIED RUN LENGTHS

- 2,400 x 4,800 dpi resolutions
- Media up to 360gsm can be printed at 85 or 95ppm
- Oversize sheet production supported
- Simplex up to 49"
- Auto duplexing to 27.5"

### INLINE FINISHING OPTIONS

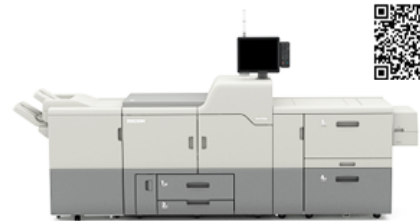
- BDT Oversize Sheet LCT
- Plockmatic oversize sheet stacker

### RANGE OF FIFTH COLOR OPTIONS

- Improved Color Stability through Auto Calibration with inline-sensors
- Improved Registration through Auto Adjustment with inline-sensors
- Support White plus CMYK in single pass
- New Invisible red toner for security applications
- Wide range of fifth color options

## RICOH Pro C7200X

Sheet-fed digital press



EXPECT MORE FROM YOUR PRINTER, FOR LESS

## RICOH Pro 8300s

Black & White Sheet-fed Multifunction Printer



### PRINTER-COPIER-SCANNER

- Cost-efficient
- Reliable
- User-friendly black-and-white printing, copying, scanning and sharing
- Capture, Store, and Share document securely
- Compact footprint

### KEY FEATURES

- 96 ppm output speed
- 1M sheet Monthly Duty Cycle
- 52 to 300 gsm media stock
- Print on 13"x19.2" sheets
- Booklets, trifolds, posters, technical documents
- Improved Contact Image Sensor(CIS) recognizes wider range of colored paper
- Data Security - User Authentication, SSL, HDD Encryption, DOSS Overwrite

FOR EDUCATORS AND ENTERPRISES IN-HOUSE AND ON-DEMAND PRINTING

### INLINE FINISHING OPTIONS

- Commercial or in-plant print organizations
- Print up to 135 ppm in color/B&W
- Supports media up to 470 gsm
- Oversized output up to 13 x 49.5"
- Auto duplexing up to 40"
- 1M pages-per-month duty cycle
- Optional Fiery Controllers for end-to-end automated workflows

### OUTSTANDING IMAGE QUALITY

- 1200 x 4800 dpi resolution
- VCSEL technology for unsurpassed image quality
- Consistent color and coverage across pages and substrates
- Outstanding front-to-back registration
- Ricoh patented IQM
  - Color control with Auto Color Diagnosis
  - Defect detection with Image Quality Monitor

### PROFESSIONAL FINISHING

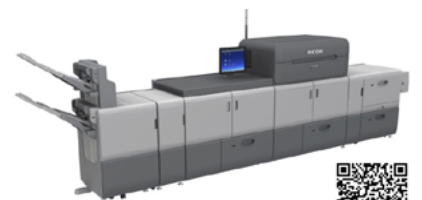
- True trifold brochures
- Book wraps
- Packaging

### High volumes with SPEED and RELIABILITY

- Landscape brochures, folder, and more
- Multiple substrates – linen, synthetics, metallics, clings

## Ricoh Pro C9200/C9210

Graphics Arts Edition



GRAPHICS ARTS SERIES FOR VERSATILE, HIGH-MARGIN APPLICATIONS



# KONICA MINOLTA

## Digital Press

### Konica Minolta AccurioPress C14000/C12000

BRILLIANT COLOR – AMAZING MEDIA FLEXIBILITY – HIGHEST DEGREE OF AUTOMATION



#### HIGH PRODUCTIVITY

- A4 size paper up to 140 ppm
- A3 size paper up to 80 ppm
- 2.5M Prints Monthly Duty Cycle
- Automated media recognition
- Air-suction feeding technology
- Up to 14,140 sheets paper input
- Up to 10 paper trays

#### STATE-OF-THE-ART PRINT SERVER

- IC-610 Konica Minolta Controller
- IC-318 EFI FIERY® Controller
- IC-319 EFI FIERY Controller
- IC-316 CERO Controller

#### COMPREHENSIVE MEDIA PROCESSING

- Up to 450 gsm paper weight in Simplex & Duplex printing
- Long sheet size – up to 51" Simplex and 35.4" Duplex
- Thin paper feeding
- Envelope printing
- Textured paper support

#### EFFICIENCY

- Automated engine linearization
- Automated duplex registration
- Automated profiling
- Real-time adjustments

ULTRA-EFFICIENT – HIGH PRODUCTIVITY- CMYK CUT-SHEET TONER PRESS

#### ALL-IN-ONE PRINT FACTORY

- 3,600 x 2,400 dpi image quality
- 80ppm 8.5"x11" color – 44ppm 11"x14" color
- Long sheet printing up to 51" (simplex), 34" (duplex)
- Duplex printing media weights up to 360 gsm
- IQ-501 – automated image position, registration and color control
- Automated full-bleed output with TU-150 inline trimmer
- IM-01 Automated media detection sensor
- Ready-made print products
  - 50 sheet booklets
  - 300 page book binding
  - 100 sheet stapling/cutting
  - Full bleed banners and posters

### Konica AccurioPress C4080/4070

High Speed Digital Press



INCREDIBLE PRODUCTIVITY & VERSATILITY

### Konica AccurioPress 6136/6120/1100

Digital Press



#### KEY FEATURES

- 136 ppm B&W Print/Copy Output
- 1200 x 1200 DPI resolution with 256 gray shades
- 3.24M sheet Monthly Duty Cycle
- Automated Closed-Loop Quality Management System
- High-speed, double-sided color scanning up to 240 opm
- 18K sheet paper capacity for long runs

SHARPER TEXT - DENSER BLACK FILLS  
SMOOTHER HALFTONE IMAGES

HIGH-QUALITY BLACK & WHITE OUTPUT AT HIGH VOLUME



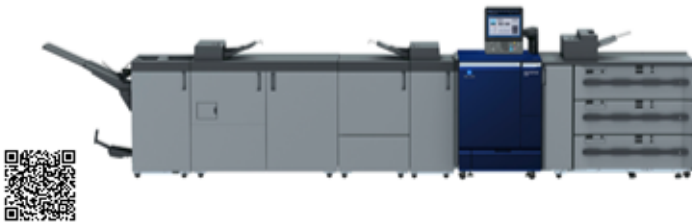


# KONICA MINOLTA

## Digital Press

### Konica AccurioPress C7100/C7090

CMYK Cut-Sheet Toner Digital Press



#### AGILITY THAT CREATES OPPORTUNITY

- 3600 x 2400 dpi image quality
- 90/100 ppm high-speed printing all media weights
- 8.27" x 8.27" up to 13" x 35.4" vacuum feed paper deck
- Print stocks from 52 to 400gsm with optional scanning
- IQ-501 Auto Inspection Technology for consistent color and registration
- Professional finishing options – saddle stitched books, bound books, GBC punching and wire binding, folded output, business cards postcards and more...

# Wide Format

### efi Pro 16h

Wide Format Hybrid UV LED Flatbed printer



- Substrates 65" x 2" Thick
- Near-photographic quality
- UV Inks - LED cool curing
- Auto duplexing up to 40"

#### LOW COST OF OWNERSHIP

- Print Speed: up to 76 ft<sup>2</sup> / hour
- CMYK plus Two White Channels for greater impact
- Print Resolution up to 1200 x 1200 dpi
- Four-level, variable-drop greyscale prints with Ricoh Gen 5 heads

#### CAPTURE MORE WIDE FORMAT MARKET SHARE



### efi Pro 30f

Everything you want in a true Flatbed Printer



#### KEY FEATURES

- Standard CMYK plus 2 White channels
- Dynamic curing LED UV lamps
- Print speeds up to 2,130 sq. ft./hour (198 sq. m/hour)
- Up to four levels of variable-drop grayscale
- Resolutions up to 1200 dpi
- Six-zone, user selectable vacuum system
- Handles flexible and rigid substrates up to 4" thick (10cm)
- Maximum printable area of 120" x 80" with bleed printing
- Maximum media weight of 400 lbs. (181 kg) evenly distributed
- One-year Enhanced Service Program (ESP) warranty covers printer, Fiery proServer Core and Fiery XF software

#### HIGHLIGHTS

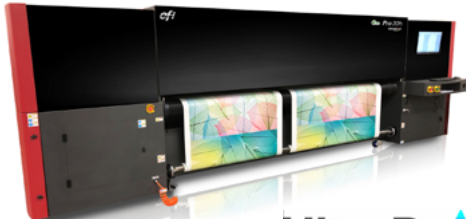
- Large print area – 120" x 80"
- Bleed Printing
- Print on up to 4" thick media
- Industry leading White Ink printing
- Double-sided printing



# Wide Format

## efi Pro 30h Wide Format Hybrid LED UV Printer

Hybrid flatbed/roll-fed entry-level Production Printer



UltraDrop  
TECHNOLOGY

ULTRA-QUALITY | ULTRA-CRISPNESS | ULTRA-CAPABILITIES

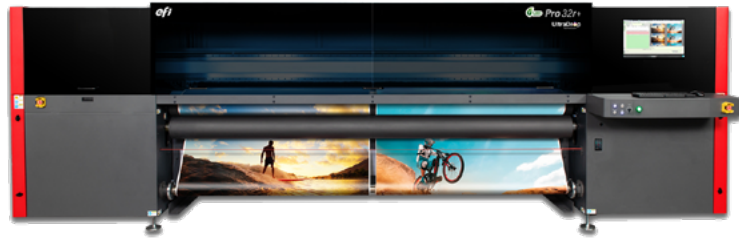
### WIDEN YOUR COMPETITIVE ADVANTAGE

- Add board and roll-to-roll print jobs
- 4 colors plus white standard with up to 1200 dpi resolution
- Magnetic linear drive for better drop placement and color gamut
- 126" maximum printable width
- 2" maximum media thickness
- 2477ft<sup>2</sup>/hr Express mode maximum speed
- EFI Fiery Digital Front end with production, color, and layout controls

## efi Pro 32r+

3.2-meter Roll-to-Roll LED Wide-Format Printer

- CMYK plus optional White or optional Clear ink
- Resolution up to 847 dpi
- Maximum productivity up to 2,835 ft<sup>2</sup> (265 m<sup>2</sup>)
- Quick and easy media loading
- Roll-to-roll, free-fall and multi-roll (2 rolls of 62.9 in/1.6 m)
- Integrated mesh kit
- Wrinkle analyzer
- Advanced software settings
- Backlit proofing lights
- Built-in lightbox
- Built-in Fiery® digital front end for the EFI Pro 32r+
- EFI - 3M™ SuperRange XF LED inks, including white



ECONOMICAL ALL-IN-ONE PRODUCTION LEVEL PRINTER

## XANTÉ

### X-UV Inkjet Flatbed Printers



**XANTÉ X-33**  
PRINT AREA 36" X 24"  
6" THICK MEDIA

- Resolution up to 2880 DPI
- Dual LED Lamps for Instant Ink Curing
- Print Variable Data and Sequentially Numbered items with independent color control (CMYK + WWWW)
- iQueue Workflow included
- Adobe PostScript 3 /PDF Workflow
- Independent CMYK Density Control
- Spot Color Matching
- Imposition, Digital File Editing

AMAZING QUALITY ON VIRTUALLY ANY MEDIA



**XANTÉ X-55**  
PRINT AREA 55" X 50"  
3" THICK MEDIA

# Finishing Systems

## Duplo DC-618 Slitter/Cutter/Creaser

All-in One finishing solution for shorter runs

- Slit/cut/crease and perforate in a single pass
- Delivers up to 23 sheets per minute
- Automated registration and changeovers
- Perforating and in-line folding options
- 8.26" x 8.26" up to 13" x 39.3" paper size
- 110-400 gsm paper weight
- Up to 6 slits per sheet
- Up to 30 cuts per sheet
- Up to 20 creases per sheet



SLIT-SCORE GREETING CARDS, "L" PERFORATED BUSINESS CARDS, ACCORDION CARDS

## Duplo DPC-600 Digital Die Cutter

Cut, Kiss Cut, Score and Perforate without physical dies

- Air powered, variable jet stream Sheet Separation
- From 8.5" x 11" to 23" x 31" Sheet Size
- Up to 6mm Cutting Thickness
- CCD camera registration system
- Easy jog file preparation
- Versatile quadruple tool head
- Integrates with Fiery JobFlow for timesaving workflow



POCKET FOLDERS, CORRUGATED BOXES, FOAM BOARDS, CHIP BOARDS, PET PLASTICS, MAGNETS

## Duplo DPC-400 Digital Die Cutter

Short-run packaging, custom-shaped cards and labels without physical dies



- Air powered, variable jet stream Sheet Separation
- Paper, laminates, adhesives and synthetic stock
- Up to 14" x 20" stock
- 200-400 gsm thickness
- Cut through knife, kiss cut knife, scoring wheel tools
- Automated registration and changeovers
- Integrates with Fiery JobFlow for timesaving workflow

LABELS AND STICKERS, PACKAGING, PROTOTYPE DESIGNS, SAMPLE PRODUCTION

## Duplo DDC-810 Spot UV Coater

Design-driven, Raised Spot UV Solution

- Paper Size – Width: 11" – 14.33" / Length: 8.27" – 29.13"
- 5.9" feed capacity
- Paper Type: Art/Coated PP Laminated
- 157-450 gsm paper weights
- 35 sheets /min (letter size – 21 sheets /min (ledger size)



PRINT EMBELLISHMENTS WITH SPOT COATING, TEXTURE AND TACTILE EFFECTS

# Finishing Systems

## Duplo DFL-500 Coat/Foil/Laminator

Apply desired film on top of sheet precisely in single machine

- 3-in-1 solution
- Up to 13" width sheets (12.6" film coverage)
- Up to 400 gsm paper weight
- Dust removing & De-curling system
- Auto Air Suction Feeder for unattended operation
- Auto film slitting & cutting to separate laminated sheets



PERFECT FOR BOOK COVERS, BUSINESS CARDS, POSTCARDS, DIRECT MAILERS, BROCHURES

## FORMAX<sup>®</sup>

### COLORMAX7 DIGITAL COLOR PRINTER



### Digital Color Printers

- Memjet print head has 70,400 ink nozzles – no moving parts
- Full-color CMYK output – up to 16.8 M colors
- Full –Bleed capability on media up to 8.5" wide
- Print 1600 x 1600 dpi at 6 inches/sec
- Print 1600 x 800 dpi at 12 inches/sec
- High-capacity ink tanks and full-automated print head cleaning

Safely use with pre-printed and windowed envelopes

Print on stuffed envelopes, 10x13 flats, chipboard, corrugated cardboard, cartons, padded envelopes and more

### COLORMAX8 DIGITAL COLOR PRINTER



## ColorMaxLP2 Digital Color Label Printer

- Full CMYK color
- Unwinder and rewinder included
- 7" color touchscreen
- Speed up to 60 ft/min
- High-capacity ink tanks
- Up to 1600 x 1600 dpi

**PLUS**  
**Cut-True Cutters**  
**Folders**  
**Creasers / Perforators**  
**Booklet Finisher**  
**JOGGERS**



# Commercial & Industrial

## KONICA MINOLTA Accurio Label 230

Digital Label Printing



### Enhanced Productivity and Flexibility

- Fast print speed up to 76 ft./min
- Short warm-up time
- Long continuous printing up to 1,000 m
- Wide media compatibility without pre-treatment
- Over printing capability with accurate registration
- Food grade safe toner
- Banner printing capability

### Consistent Quality

- High resolution – 3600 x 1200 dpi x 8 bits
- Cutting-edge image processing technology
- Simitri HDE toner – high quality with energy-saving
- High quality screens
- Line thinning and edge enhancement technologies

## Ricoh Pro VC40000 / VC60000 / VC70000

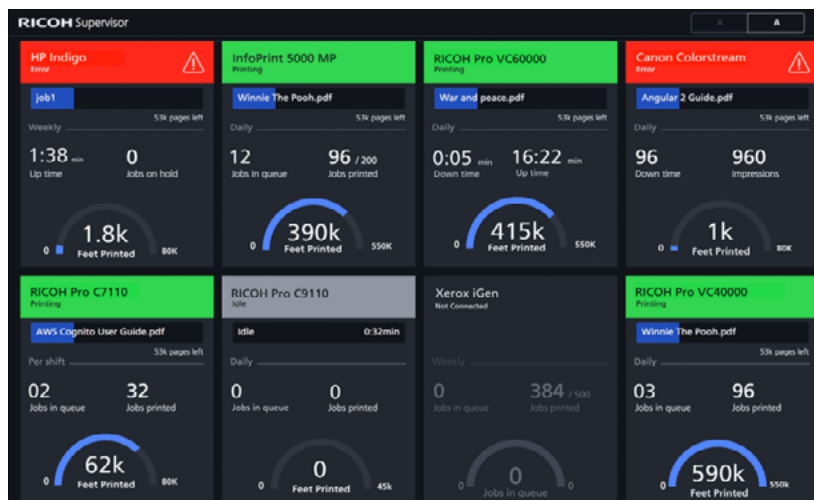
Continuous Feed Inkjet Printers



Transition offset graphic arts work more easily with digital high-value applications like direct mail, brochures, sales collateral, catalogs, custom publications, high-volume store signage and more.

Take advantage of greater short-run and fast-turn efficiencies to compete for a wider variety of profitable work.

# Software Productivity Solutions



## RICOH Supervisor™

Always be aware of what is happening in your shop!

Cloud-based application that monitors and improves your print production environment.

- Collects and stores print production information for multiple printers to the cloud
- Provides near real-time summaries via customized visual dashboard
- Sends Notifications when devices are Idle or in Error State

# Software Productivity Solutions

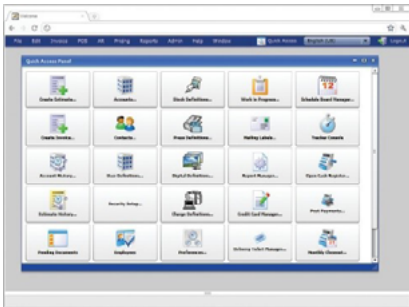


Cloud-based web-to-print software that automates electronic print job submissions. Improve production print center operations with centralized cloud orders, workflow automation and real-time reporting.

- Forms Manager
- Design Tool
- JDF Compliant
- PDF Converter
- Automated Billing
- Secured Access

## efi PRINTSMITH VISION

**Browser-based, scalable, customizable print management solutions to streamline operations, reduce cost, and provide visibility for success.**



- Estimating & Quoting
- Order Management
- Financial Management
- Scheduling
- Shop-floor Data Collection
- Mobile Views
- Vision Dashboard
- Integrate Credit Card Processing

### Designed For:

- Franchise shops
- Digital Print Shops
- Commercial Printers
- Inplant Print Centers
- Sign & Display Graphics Printers

## efi MARKETDIRECT STOREFRONT

**Browser-based, scalable, customizable print management solutions to streamline operations, reduce cost, and provide visibility for success.**

### Purposed-built to empower:

- Commercial printers
- Inplant print centers, packaging printers & converters
- Franchise print network
- Sign and display graphic printers
- Corporate marketing and communications teams
- Enterprise commercial printers
- Site Building Tools
- Personalization
- Customer management
- Marketing Tools
- Inventory Management
- Shipping Management
- Ecosystem
- Reporting & Analytics
- Integration & Data Exchange



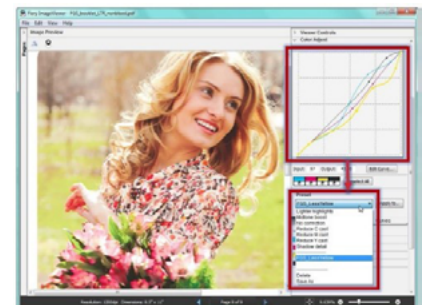
## efi FIERY GRAPHIC ARTS PRO PACKAGE

### What you see if what you print

Expert tools right on the Fierey server to identify and correct print production issues before they result in rejected jobs and wasted clicks

### Features included:

- Fierey Image Viewer
- Fierey Spot Pro
- Fierey Preflight Pro
- Fierey Postflight
- Fierey Control Bar



# Software Productivity Solutions



## Fiery JobFlow

Prepress workflow automation software

Automate prepress workflows to produce ready-to-print files that increases productivity and reduce costs.



## Advanced PDF-based make-ready document assembly for higher print productivity.

Media assignment, chapter definition, advance page numbering, fully visual tab insertion and design, finishing, scanning, and powerful late stage editing features.



## Shop Floor data management for Print & Packaging Industries

Automatically gather, analyze, and review shop floor production data to make strategic business decision that positively impact print, packaging, or corrugated workflows.



For display graphic printers

## Get a quick overview of the current state of your printers

Total number of jobs printer – Total length and area printed – Print utilization  
Status of each print – Ink usage by color – Device Configuration.



**IQ Dashboard**  
Visualize today's key production metrics



**EFI Notify**  
Receive alerts and production reports



**EFI Insight**  
Capture and transform data into actionable analytics



Document delivery solutions for transactional/POD production printing environments and online web presentment.

**Production Print Management  
CCM Platform & Automation**

**Post Composition & e-Delivery CCM  
Data Extraction & Indexing Tools**

## OBJECTIF LUNE



OL\* Software

### Automate your business processes

Personalize outbound transaction communications with multi-channel communication toolset.



### Supercharge your outputs

Design better documents with your existing data sources.

Thinking production printing?

# Think Atlantic, Tomorrows Office.

Need help? We're ready when you are.

## About Atlantic, Tomorrow's Office

Atlantic is an award-winning Office Technology and IT Solutions company providing Imaging Products, IT Support, Document Management and Managed Services to small and large companies in the New York City metropolitan area, and the Greater Philadelphia and Delaware Valley.

Call us at: (855) 741-6400

Visit us at [tomorrowsoffice.com](http://tomorrowsoffice.com)

